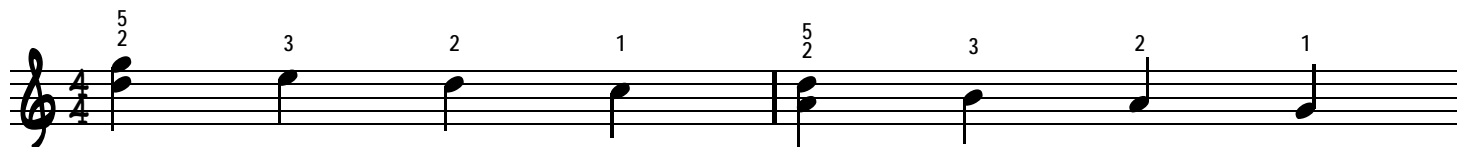


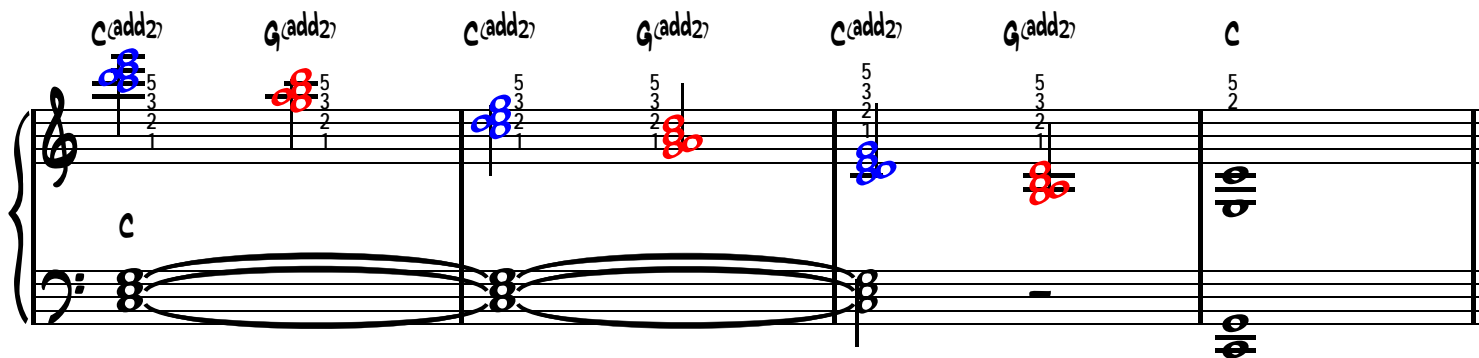
Quick Piano Licks: Lesson 2

Basic pattern shape



Example A

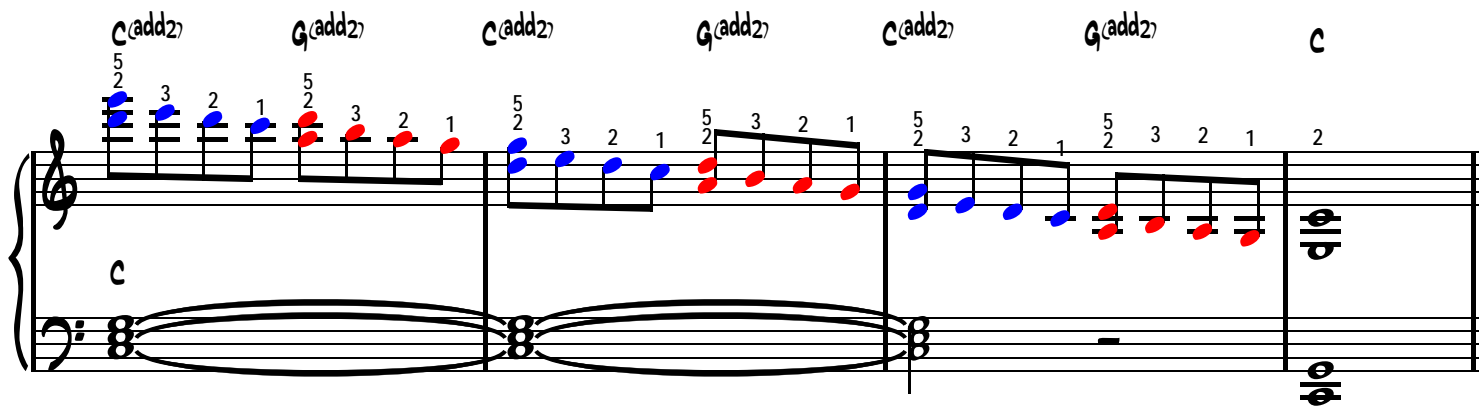
This exercise features two right hand chords, C(add2) and G(add2), being played alternately over a C major accompaniment.



Now you will arpeggiate the above right hand chords (see below). **Do not throw out your right elbow** when changing hand positions. Rather, let your thumb be an anchor and slide your hand left, over the thumb, as your index finger crosses over the thumb. From your point of view, the thumb will disappear under your palm for a quick moment as the index finger crosses over.

Start slow and increase the tempo as you get comfortable with the pattern.

For transposing this exercise to other keys: C(add2) is a "1" chord and G(add2) is a "5" chord.



Example B

This exercise features two right hand chords, C(add2) and Gm(add2), being played alternately over a C7 accompaniment.

Musical notation for Example B. The piece is in C major. The bass clef shows a C7 accompaniment in the left hand, consisting of a sustained chord of C7 (C, E, G, Bb) with a 5-finger fingering. The right hand alternates between C(add2) and Gm(add2) chords. The C(add2) chord is shown with a 5-finger fingering (5, 3, 2, 1). The Gm(add2) chord is shown with a 5-finger fingering (5, 3, 2, 1). The final measure shows a C chord with a 5-finger fingering (5, 2).

Now you will arpeggiate the above chords using the fingerings provided. Start slow and increase the tempo as you get comfortable with the pattern. For **transposing** this exercise to other keys: C(add2) is a "1" chord and Gm(add2) is a "5" chord.

Musical notation for Example B showing arpeggiated chords. The bass clef shows a C7 accompaniment in the left hand, consisting of a sustained chord of C7 (C, E, G, Bb) with a 5-finger fingering. The right hand arpeggiates the C(add2) and Gm(add2) chords. The C(add2) arpeggio is shown with a 5-finger fingering (5, 3, 2, 1). The Gm(add2) arpeggio is shown with a 5-finger fingering (5, 3, 2, 1). The final measure shows a C chord with a 5-finger fingering (5, 2).

Example C

This exercise features two right hand chords, Cm(add2) and Gm(add2), being played alternately over a Cm7 accompaniment.

Musical notation for Example C. The right hand (treble clef) shows alternating chords: Cm(add2) (blue), Gm(add2) (red), Cm(add2) (blue), Gm(add2) (red), Cm(add2) (blue), Gm(add2) (red), and Cm (black). Fingerings are indicated by numbers 1-5. The left hand (bass clef) shows a Cm7 accompaniment with a sustained bass line. The key signature has one flat (Bb).

Now, arpeggiate the above chords using the fingerings provided.

Start slow and increase the tempo as you get comfortable with the pattern.

For transposing this exercise to other keys: Cm(add2) is a "1" chord and Gm(add2)" is a "5" chord.

Musical notation for Example C showing arpeggiated chords. The right hand (treble clef) shows the arpeggiated notes for Cm(add2) (blue), Gm(add2) (red), Cm(add2) (blue), Gm(add2) (red), Cm(add2) (blue), Gm(add2) (red), and Cm (black). Fingerings are indicated by numbers 1-5. The left hand (bass clef) shows a Cm7 accompaniment with a sustained bass line. The key signature has one flat (Bb).

Example D

This exercise features two right hand chords, Cm(add2) and Fm(add2), being played alternately over a Cm7 accompaniment.

Musical notation for Example D. The piece is in C minor. The right hand (RH) plays alternating chords: Cm(add2) (blue notes), Fm(add2) (red notes), Cm(add2), Fm(add2), Cm(add2), Fm(add2), and Cm. The left hand (LH) plays a Cm7 accompaniment. Fingerings are indicated by numbers 1-5 above the notes.

You will now arpeggiate the above chords using the fingerings provided.
 Start slow and increase the tempo as you get comfortable with the pattern.
 For transposing this exercise to other keys: Cm(add2) is a "1" chord and Fm(add2) is a "4" chord.

Musical notation for Example D showing arpeggiated chords. The RH plays arpeggiated versions of Cm(add2) and Fm(add2) with fingerings: Cm(add2) (5, 2, 3, 2, 1) and Fm(add2) (5, 2, 3, 2, 1). The LH accompaniment is the same as in the previous example.

Example E

This exercise features two right hand chords, Cm(add2) and Gm(add2), being played alternately over a Cm accompaniment.

Musical notation for Example E. The piece is in C minor (one flat). The left hand plays a steady accompaniment of C minor (Cm) chords. The right hand plays a sequence of chords: Cm(add2) (blue), Gm(add2) (red), Cm(add2) (blue), Gm(add2) (red), Cm(add2) (blue), Gm(add2) (red), and Cm (black). Fingerings are indicated by numbers 1-5 above the notes.

So if you've gotten this far, you know what to do!
For transposing this exercise to other keys: Cm(add2) is a "1" chord and Gm(add2)" is a "5" chord.

Musical notation for Example E, showing a melodic line in the right hand. The left hand accompaniment is the same as in the previous example. The right hand plays a sequence of chords: Cm(add2) (blue), Gm(add2) (red), Cm(add2) (blue), Gm(add2) (red), Cm(add2) (blue), Gm(add2) (red), and Cm (black). The melodic line consists of eighth notes with fingerings: Cm(add2) (5, 2, 3, 2, 1), Gm(add2) (5, 2, 3, 2, 1), Cm(add2) (5, 2, 3, 2, 1), Gm(add2) (5, 2, 3, 2, 1), Cm(add2) (5, 2, 3, 2, 1), Gm(add2) (5, 2, 3, 2, 1), and Cm (5, 2).