

SKELETON KEY TO THE BLUES: PART 2

- The first two pages contain eighteen short riffs using the notes of the C blues scale that we learned in Part 1.
- As you learn these riffs, you can start combining them to form larger musical phrases.
- Think of these riffs as sentences you can combine to create paragraphs.

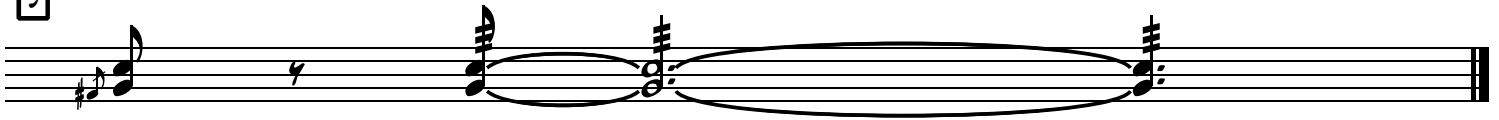
1



2



3



4



5



6



7



8



9



10



11



12



13



14



15



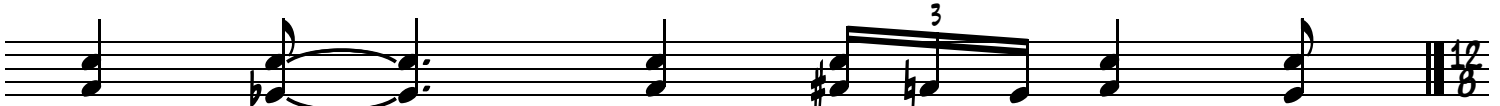
16



17



18



- These next two pages combine various numbered riffs from pages 1-2.
- Below each measure I have included the chords of a simple 12-bar blues so you can play the left hand pattern of your choice, conforming to a 12-bar blues progression.
- I encourage you to create your own solos from the eighteen riffs, as well as making up riffs of your own from the C blues scale.
- This study only touches on the infinite possibilities of combinations available when you take shorter riffs and motifs and combine them into larger phrases for soloing.
- Shake them up like dice... toss them around... and see what happens!

12-Bar Blues Progression Example One

[1] [2]

chord symbols → C F

[1] [3]

C C

[4] [5]

F F

[6]

C

[10] [11]

G F

[7]

C G

12-Bar Blues Progression Example One

15

chord symbols →

C F

15

C C

10

F F

12

C C

13

F

18

C G